

Validated Antibodies for Canine and Feline Research



www.genetex.com



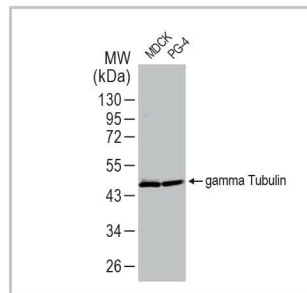
see more

GeneTex understands that veterinary researchers, as well as scientists who utilize canine and/or feline model systems, require high-quality antibodies to achieve accurate and reproducible results. For this reason, we are specifically testing an increasing number of our products for performance with dog and cat samples in addition to human, mouse, rat, and other animal species. All of the antibodies listed below have data supporting their use with dog and/or cat cells, cell lysates, or tissues.

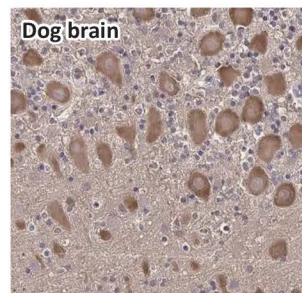
For more information about these reagents, or if you are interested in testing these antibodies in previously untested species, please contact the GeneTex Technical Support Team at info@genetex.com.



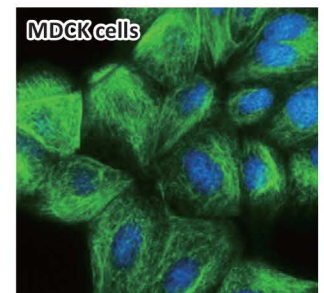
Cat colon
ACE2 antibody [HL1092]
(GTX636265)



gamma Tubulin antibody
[HL1175] (GTX636480)



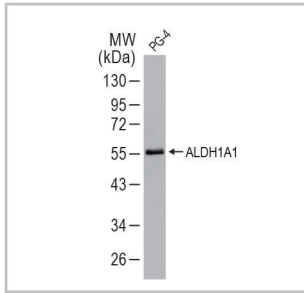
Dog brain
TLR3 antibody [HL2314]
(GTX638477)



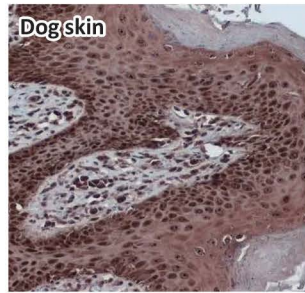
MDCK cells
Vimentin antibody
(GTX100619)



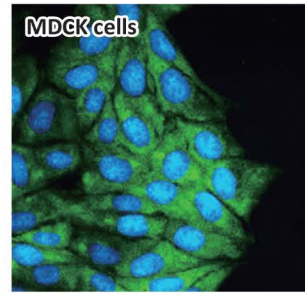
Highly Cited Antibodies



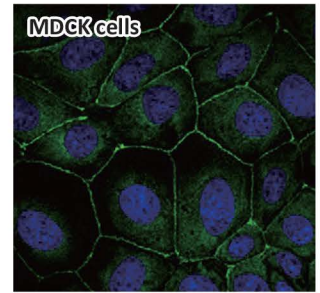
ALDH1A1 antibody
(GTX123973)



Bcl-2 antibody [N1N2], N-term
(GTX100064)



Desmin antibody
(GTX103557)

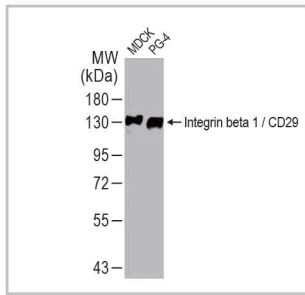


ZO-1 antibody
(GTX108592)

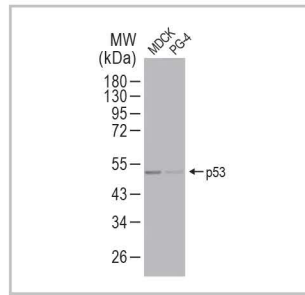


| Cat. No. | Product Name | Clonality | Reactivity | Applications |
|-----------|--|------------|--|---|
| GTX11003 | Actin antibody [AC-40] | Ms mAb | Bov, Carp, Chk, Dog, Goat, Gpig, Hm, Hu, Mk, Ms, Pig, Rat, Rb, Sheep, snail, Viper, Xenopus | ELISA, ICC/IF, IHC-Fr, WB |
| GTX11004 | Actin antibody [AC-40] (Cy3) | Ms mAb | Bov, Carp, Chk, Dog, Goat, Gpig, Hm, Hu, Ms, Pig, Rat, Rb, Sheep, snail, Viper, Xenopus | ICC/IF, WB |
| GTX11005 | Actin antibody [AC-40] (FITC) | Ms mAb | Bov, Carp, Chk, Dog, Goat, Gpig, Hm, Hu, Ms, Pig, Rat, Rb, Sheep, snail, Viper, Xenopus | ICC/IF, WB |
| GTX102419 | Albumin antibody | Rb pAb | Cat, Dog, Hu, Ms, Rat | ICC/IF, IHC, IHC-Fr, IHC-P, WB |
| GTX123973 | ALDH1A1 antibody | Rb pAb | Cat, Hu, Ms, Rat, Zfsh | ICC/IF, IHC-P, IHC-Wm, WB |
| GTX27291 | alpha Tubulin antibody [DM1A] | Ms mAb | Bov, Chk, Dog, Fungi, Hu, Mk, Ms, Rat, Yeast | ICC/IF, IHC, IP, WB |
| GTX100064 | Bcl-2 antibody [N1N2], N-term | Rb pAb | Cat, Dog, Hu, Ms, Rat, Zfsh | ICC/IF, IHC-P, WB |
| GTX109639 | beta Actin antibody | Rb pAb | C. albicans, C. elegans, Cat, Chk, Dm, Dog, E. coli, Hm, Hrs, Hu, Mk, Mosq, Ms, Pig, Plant, Rat, Rice, Sheep, Treeshrew, Worm, Xenopus, Yeast | ICC/IF, IHC-Fr, IHC-P, IP, WB |
| GTX101435 | beta Catenin antibody [N1N2-2], N-term | Rb pAb | Cat, Dog, Hu, Ms, Rat, Rb, Zfsh | ChIP assay, FACS, ICC/IF, IHC, IHC-Fr, IHC-P, IHC-Wm, IP, WB |
| GTX110723 | Caspase 8 antibody | Rb pAb | Cat, Dog, Hu, Ms, Rat | ICC/IF, IHC-P, WB |
| GTX112888 | Caspase 9 antibody [N2C3] | Rb pAb | Dog, Hu, Ms, Rat | IHC-P, IP, WB |
| GTX76185 | CD9 antibody [MM2/57] | Ms mAb | Bov, Cat, Dog, Frt, Hrs, Hu, Lma, Mink, Ms, Pig, Rb, RMK | Blocking, FACS, IHC-Fr, IHC-P, WB |
| GTX76182 | CD9 antibody [MM2/57] (Biotin) | Ms mAb | Bov, Cat, Dog, Frt, Hrs, Hu, Lma, Mink, Pig, Rb, RMK | FACS, WB |
| GTX76183 | CD9 antibody [MM2/57] (FITC) | Ms mAb | Bov, Cat, Dog, Frt, Hrs, Hu, Lma, Mink, Pig, Rb, RMK | FACS, WB |
| GTX76186 | CD9 antibody [MM2/57] (PE) | Ms mAb | Bov, Cat, Dog, Frt, Hrs, Hu, Lma, Mink, Pig, Rb, RMK | FACS, WB |
| GTX108624 | Cyclin D1 antibody [N1C3] | Rb pAb | Cat, Dog, Hu, Rat | ELISA, ICC/IF, IHC-P, IP, Sandwich ELISA, WB |
| GTX108585 | Cytochrome C antibody | Rb pAb | Dm, Dog, Hu, Ms, Rat | ICC/IF, IHC-Fr, IHC-P, WB |
| GTX103557 | Desmin antibody | Rb pAb | Cat, Chk, Dog, Hu, Ms, Pig, Rat | FACS, ICC/IF, IHC-Fr, IHC-P, WB |
| GTX100443 | E-Cadherin antibody | Rb pAb | Dog, Hu, Ms, Rat, Zfsh | ICC/IF, IHC-P, IHC-Wm, IP, PLA, WB |
| GTX134462 | ERK1/2 antibody | Rb pAb | Cat, Dog, Hu, Ms, Rat | WB |
| GTX100118 | GAPDH antibody | Rb pAb | Bacteria, Bov, C. elegans, Chk, Dm, Dog, E. coli, Fish, Hm, Hu, Insect, milkfish, Mk, Mosq, Ms, Nematode, Pig, Pika, Plant, Rat, Rb, Yeast, Zfsh | ICC/IF, IHC-P, IP, WB |
| GTX635013 | GAPDH antibody [GT239] - VetSignal | Ms mAb | Cat, Dog | ICC/IF, IHC-P, WB |
| GTX20015 | Heavy chain cardiac Myosin antibody [3-48] | Ms mAb | Bov, Dog, Hu, Ms, Pig, Rat, Rb | ELISA, ICC/IF, IHC-Fr, WB |
| GTX128839 | Integrin beta 1 / CD29 antibody | Rb pAb | Dog, Hu, Ms, Rat | ICC/IF, IHC-Fr, IHC-P, IP, WB |
| GTX30773 | NeuN antibody [2Q158] | Ms mAb | Crocodile, Dog, Hu, Ms, Rat, Rb | ICC/IF, IHC-Fr, IHC-P, WB |
| GTX23364 | P Glycoprotein antibody [C219] | Ms mAb | Bov, Carp, Dog, Hu, Ms, Rat, Zfsh | ELISA, FACS, ICC/IF, IHC, IHC-Fr, IHC-P, IP, WB |
| GTX110720 | p38 MAPK antibody [N1C3-2] | Rb pAb | Dog, Hu, Ms, Rat | ICC/IF, IHC-P, WB |
| GTX102425 | p63 antibody [N2C1], Internal | Rb pAb | Cat, Dog, Hu, Ms, Rat | ICC/IF, IHC-Fr, IHC-P, IP, PLA, WB |
| GTX26401 | pan Cytokeratin antibody [PCK-26] | Ms mAb | Bov, Carp, Cat, Chk, Dog, Goat, Gpig, Hm, Hu, Lzd, Ms, Pig, Rat, Rb, Sheep, Snk | Blocking, Dot, FACS, ICC/IF, IHC, IHC-Fr, IHC-P, WB |
| GTX75144 | PCNA antibody [PC10] (FITC) | Ms mAb | Atlantic salmon, Cat, Chk, CIMK, Dog, Frt, Hm, Hrs, Hu, Ms, Rat, Rb, RMK, Sheep, Xenopus | FACS, IHC |
| GTX101025 | PTEN antibody | Rb pAb | Cat, Dog, Hu, Ms, Pig, Rat | ICC/IF, IHC-P, WB |
| GTX75742 | TLR4 antibody [HTA125] | Ms mAb | Cat, Dog, Gpig, Hu, Ms, Pig, RMK | Blocking, FACS, ICC/IF, IHC-Fr, IHC-P, IP, WB |
| GTX11210 | TLR4 antibody [HTA125] (Biotin) | Ms mAb | Dog, Gpig, Hu, Pig, RMK | FACS, ICC/IF |
| GTX28378 | TLR4 antibody [HTA125] (FITC) | Ms mAb | Dog, Gpig, Hu, Pig, RMK | FACS, ICC/IF |
| GTX75740 | TLR4 antibody [HTA125] (Low endotoxin, azide free) | Ms mAb | Cat, Dog, Gpig, Hu, Ms, Pig, RMK | Blocking, FACS, Functional Assay, ICC/IF, IP, Neutralizing/Inhibition, WB |
| GTX11227 | TLR4 antibody [HTA125] (PE) | Ms mAb | Dog, Gpig, Hu, Pig, RMK | FACS, ICC/IF |
| GTX70255 | TSG101 antibody [4A10] | Rec Ms mAb | Dog, Hm, Hu, Mk, Ms, Pig, Rat, Zfsh | ELISA, EM, FACS, ICC/IF, IHC, IHC (Free Floating), IHC-P, IP, WB |
| GTX113030 | VCP antibody [N1N2], N-term | Rb pAb | Dog, Hu, Ms, Rat, Zfsh | ICC/IF, IHC-P, IHC-Wm, WB |
| GTX100619 | Vimentin antibody | Rb pAb | Cat, Dog, Hu, Ms, Rat | ELISA, ICC/IF, IHC, IHC-Fr, IHC-P, IP, Sandwich ELISA, WB |
| GTX108592 | ZO-1 antibody | Rb pAb | Bov, Dog, Hu, Mk, Ms, Pig | ICC/IF, IHC-Fr, IHC-P, WB |

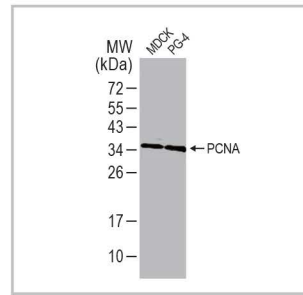
Recombinant Antibodies



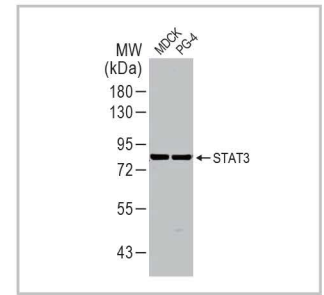
Integrin beta 1 / CD29 antibody [HL1255] (GTX636657)



p53 antibody [HL2242] (GTX638291)



PCNA antibody [HL1965] (GTX637858)

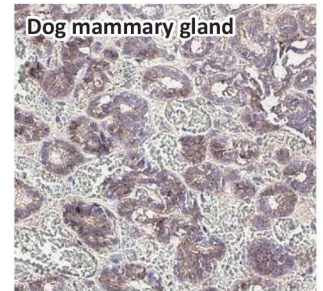
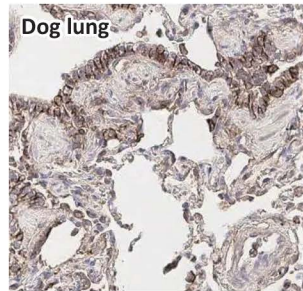
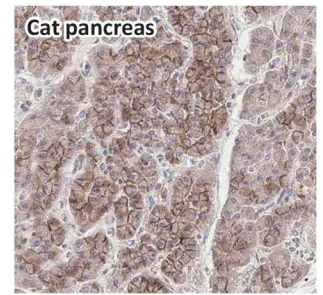
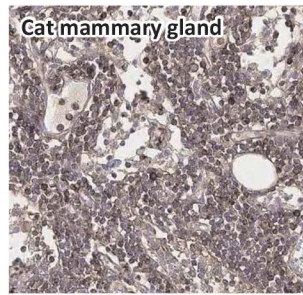
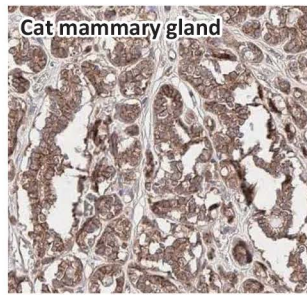


STAT3 antibody [HL1134] (GTX636400)

| Cat. No. | Product Name | Clonality | Reactivity | Applications |
|-----------|--|------------|-----------------------------|----------------------------------|
| GTX635479 | 53BP1 antibody [HL275] | Rec Rb mAb | Cat, Dog, Hu, Ms, Rat | ICC/IF, IHC-P, WB |
| GTX636265 | ACE2 antibody [HL1092] | Rec Rb mAb | AGMK, Cat, Dog, Hu | ICC/IF, IHC-P, WB |
| GTX637047 | ADAM17 antibody [HL1572] | Rec Rb mAb | Cat, Dog, Hu, Ms | IHC-P, WB |
| GTX636413 | AKT1 antibody [HL1142] | Rec Rb mAb | Cat, Dog, Hu, Rat | ICC/IF, IHC-P, WB |
| GTX637940 | Bcl-XL antibody [HL2039] | Rec Rb mAb | Cat, Dog, Hu | ICC/IF, IHC-P, WB |
| GTX637403 | beta Catenin antibody [HL1753] | Rec Rb mAb | Cat, Dog, Hu, Ms | ICC/IF, IHC-P, WB |
| GTX637085 | B-Raf antibody [HL1606] | Rec Rb mAb | Cat, Dog, Hu, Ms, Rat | ICC/IF, IHC-P, WB |
| GTX637077 | Calnexin antibody [HL1598] | Rec Rb mAb | Cat, Dog, Hu, Ms, Rat | IHC-P, WB |
| GTX637068 | CD28 antibody [HL1589] | Rec Rb mAb | Cat, Dog, Hu | ICC/IF, IHC-P, WB |
| GTX637231 | CD44 antibody [HL1650] | Rec Rb mAb | Cat, Dog, Hu | ICC/IF, IHC-P, WB |
| GTX635979 | ciAP1 antibody [HL1045] | Rec Rb mAb | Cat, Dog, Hu, Ms, Rat | IHC-P, WB |
| GTX636468 | CPT1A antibody [HL1164] | Rec Rb mAb | Cat, Dog, Hu, Ms | IHC-P, WB |
| GTX636580 | Dicer antibody [HL1232] | Rec Rb mAb | Cat, Dog, Hu, Ms, Rat | ICC/IF, IHC-P, WB |
| GTX637063 | Dopamine Receptor D2 antibody [HL1584] | Rec Rb mAb | Cat, Dog, Hu, Ms, Rat | ICC/IF, IHC-P, WB |
| GTX636577 | E-Cadherin antibody [HL1229] | Rec Rb mAb | Cat, Dog, Hu, Ms, Rat | ICC/IF, IHC-P, WB |
| GTX637446 | EPO antibody [HL1794] | Rec Rb mAb | Cat, Dog, Hu | ELISA, IHC-P, Sandwich ELISA, WB |
| GTX636884 | FCER1G antibody [HL1418] | Rec Rb mAb | Cat, Dog, Hu, Ms, Rat | ICC/IF, IHC-P, WB |
| GTX637074 | FGFR3 antibody [HL1595] | Rec Rb mAb | Cat, Dog, Hu | WB |
| GTX636487 | GAD65 + GAD67 antibody [HL1181] | Rec Rb mAb | Cat, Dog, Hu, Ms, Rat, Zfsh | ICC/IF, IHC-P, WB |
| GTX636493 | GAD65 antibody [HL1187] | Rec Rb mAb | Cat, Dog, Hu, Ms, Rat, Zfsh | ICC/IF, IHC-P, WB |
| GTX636280 | GAD67 antibody [HL1096] | Rec Rb mAb | Cat, Dog, Hu, Ms, Rat, Zfsh | IHC-P, IHC-Wm, WB |
| GTX637921 | Galectin 3 antibody [HL2020] | Rec Rb mAb | Cat, Dog, Hu, Ms | ICC/IF, IHC-P, WB |
| GTX636480 | gamma Tubulin antibody [HL1175] | Rec Rb mAb | Cat, Dm, Dog, Hu, Ms, Rat | ICC/IF, WB |
| GTX637966 | GAPDH antibody [HL2062] | Rec Rb mAb | Cat, Dog, Hu, Ms, Rat, Zfsh | ICC/IF, WB |
| GTX638336 | Glutamine synthetase antibody [HL2283] | Rec Rb mAb | Cat, Dog, Hu, Ms, Rat | IHC-P, WB |
| GTX637432 | Heme Oxygenase 1 antibody [HL1780] | Rec Rb mAb | Cat, Dog, Hu, Ms, Rat | IHC-P, WB |
| GTX637378 | HGS antibody [HL1730] | Rec Rb mAb | Cat, Dog, Hu | ICC/IF, IHC-P, WB |
| GTX637963 | HMGB1 antibody [HL2059] | Rec Rb mAb | Cat, Dog, Hu, Ms, Rat | ELISA, ICC/IF, IHC-P, WB |
| GTX637916 | HPRT antibody [HL2015] | Rec Rb mAb | Cat, Dog, Hu, Ms, Rat, Zfsh | ICC/IF, IHC-P, WB |
| GTX637059 | Hsp70 antibody [HL1580] | Rec Rb mAb | Cat, Dog, Hu, Ms, Rat | ICC/IF, IHC-P, WB |
| GTX636657 | Integrin beta 1 / CD29 antibody [HL1255] | Rec Rb mAb | Cat, Dog, Hu, Ms | ICC/IF, IHC-P, WB |
| GTX637918 | ISG15 antibody [HL2017] | Rec Rb mAb | Cat, Hu, Ms, Rat | ICC/IF, IHC-P, WB |
| GTX637379 | KDM6A antibody [HL1731] | Rec Rb mAb | Cat, Dog, Hu | ICC/IF, IHC-P, WB |
| GTX637019 | MCL1 antibody [HL1544] | Rec Rb mAb | Cat, Dog, Hu, Ms, Rat | IHC-P, WB |
| GTX636826 | Mre11 antibody [HL1386] | Rec Rb mAb | Dog, Hu, Ms, Rat | ICC/IF, IHC-P, WB |
| GTX637955 | MX1 antibody [HL2051] | Rec Rb mAb | Cat, Dog, Hu, Ms | IHC-P, WB |
| GTX637005 | NPEPPS antibody [HL1531] | Rec Rb mAb | Cat, Dog, Hu, Ms, Rat, Zfsh | ICC/IF, IHC-P, WB |
| GTX635797 | p38 MAPK antibody [HL1006] | Rec Rb mAb | Cat, Dog, Hu, Ms, Rat | WB |
| GTX638291 | p53 antibody [HL2242] | Rec Rb mAb | Cat, Dog, Hu, Ms | ICC/IF, IHC-P, WB |
| GTX637858 | PCNA antibody [HL1965] | Rec Rb mAb | Cat, Dog, Hu, Ms, Rat, Zfsh | IHC-P, WB |
| GTX636799 | PDE6D antibody [HL1359] | Rec Rb mAb | Cat, Dog, Hu, Ms, Rat, Zfsh | ICC/IF, IHC-P, WB |
| GTX637103 | PI3 kinase C2 alpha antibody [HL1612] | Rec Rb mAb | Cat, Dog, Hu, Ms, Rat | IHC-P, WB |
| GTX637912 | PIP5K1A antibody [HL2011] | Rec Rb mAb | Cat, Dog, Hu, Rat | ICC/IF, IHC-P, WB |
| GTX637979 | Plasminogen antibody [HL2071] | Rec Rb mAb | Cat, Dog, Hu, Ms, Rat, Zfsh | ICC/IF, IHC-P, WB |
| GTX637951 | PODXL antibody [HL2047] | Rec Rb mAb | Cat, Hu, Ms, Rat | IHC-P, WB |
| GTX636919 | PP2A alpha antibody [HL1447] | Rec Rb mAb | Cat, Dm, Dog, Hu, Ms, Rat | ICC/IF, IHC-P, WB |

Recombinant
 Citation Support
 KO/KD Validation
 Comparable Abs
 IP/MS Analysis
 Orthogonal Validation
 Protein Overexpression

Recombinant Antibodies



AKT1 antibody [HL1142]
(GTX636413)



beta Catenin antibody [HL1753]
(GTX637403)



CD44 antibody [HL1650]
(GTX637231)



E-Cadherin antibody [HL1229]
(GTX636577)



| Cat. No. | Product Name | Clonality | Reactivity | Applications |
|----------|--------------|-----------|------------|--------------|
|----------|--------------|-----------|------------|--------------|

| | | | | |
|-----------|--|------------|-----------------------------|---------------------------|
| GTX636971 | RAB5A antibody [HL1497] | Rec Rb mAb | Cat, Dog, Hu, Ms, Rat | ICC/IF, IHC-P, IP, WB |
| GTX638546 | RNase H1 antibody [HL2343] | Rec Rb mAb | Dog, Hu, Ms | IHC-P, WB |
| GTX638544 | RNase L antibody [HL2341] | Rec Rb mAb | Dog, Hu, Ms, Rat | WB |
| GTX635976 | RPB2 antibody [HL1042] | Rec Rb mAb | Cat, Dog, Hu, Ms, Rat, Zfsh | IHC-P, IHC-Wm, WB |
| GTX638494 | RPL32 antibody [HL2331] | Rec Rb mAb | Dog, Hu, Ms, Rat, Zfsh | ICC/IF, IHC-P, WB |
| GTX636579 | RRM1 antibody [HL1231] | Rec Rb mAb | Cat, Dog, Hu, Ms, Rat | ICC/IF, IHC-P, WB |
| GTX638300 | SDHB antibody [HL2251] | Rec Rb mAb | Dog, Hu, Ms, Rat | IHC-P, WB |
| GTX638555 | SERCA2 ATPase antibody [HL2352] | Rec Rb mAb | Cat, Dog, Hu, Ms, Rat | IHC-P, WB |
| GTX637889 | SLC1A5 antibody [HL1988] | Rec Rb mAb | Cat, Hu, Ms | ICC/IF, IHC-P, WB |
| GTX637255 | SNAP91 antibody [HL1657] | Rec Rb mAb | Cat, Hu, Ms, Rat | IHC-P, WB |
| GTX637250 | SOD1 antibody [HL1652] | Rec Rb mAb | Cat, Dog, Hu, Ms, Rat | ICC/IF, IHC-P, WB |
| GTX636297 | Somatostatin antibody [HL1101] | Rec Rb mAb | Cat, Dog, Ms, Rat | ICC/IF, IHC-Fr, IHC-P, WB |
| GTX636800 | StAR antibody [HL1360] | Rec Rb mAb | Cat, Dog, Hu, Ms | ICC/IF, IHC-P, WB |
| GTX636400 | STAT3 antibody [HL1134] | Rec Rb mAb | Cat, Dog, Hu, Ms, Rat | IHC-P, WB |
| GTX637282 | TCEB1 antibody [HL1683] | Rec Rb mAb | Cat, Dm, Dog, Hu, Ms | IHC-P, WB |
| GTX636635 | Thymidylate synthase antibody [HL1236] | Rec Rb mAb | Cat, Dog, Hu, Ms, Rat | ICC/IF, IHC-P, WB |
| GTX638477 | TLR3 antibody [HL2314] | Rec Rb mAb | Cat, Dog, Hu, Ms, Rat | IHC-P, WB |
| GTX637405 | VEGFA antibody [HL1755] | Rec Rb mAb | Cat, Dog, Hu, Ms | ICC/IF, IHC-P, WB |
| GTX636980 | Vimentin antibody [HL1506] | Rec Rb mAb | Cat, Hu, Ms, Rat | ICC/IF, IHC-P, WB |
| GTX637622 | Vinculin antibody [HL1873] | Rec Rb mAb | Cat, Dog, Hu, Ms, Rat, Zfsh | IHC-P, WB |
| GTX638372 | VPS34 antibody [HL2305] | Rec Rb mAb | Dog, Hu, Ms, Rat | ICC/IF, IHC-P, WB |
| GTX635821 | VPS35 antibody [HL1017] | Rec Rb mAb | Cat, Dog, Hu, Ms, Rat, Zfsh | ICC/IF, IHC-P, IP, WB |
| GTX637962 | VWF antibody [HL2058] | Rec Rb mAb | Cat, Hu | IHC-P, WB |
| GTX637900 | Wnt2 antibody [HL1999] | Rec Rb mAb | Hu, Ms, Rat, Zfsh | WB |
| GTX636914 | ZC3H12A antibody [HL1442] | Rec Rb mAb | Cat, Hu | WB |
| GTX636491 | ZO-1 antibody [HL1185] | Rec Rb mAb | Cat, Dog, Hu, Ms, Rat | ICC/IF, WB |



GeneTex

International
USA

Tel: 886.3.6208988
Tel: 1.949.553.1900

Toll-free: 1.877.436.3839

www.genetex.com

PD-V006-20231205